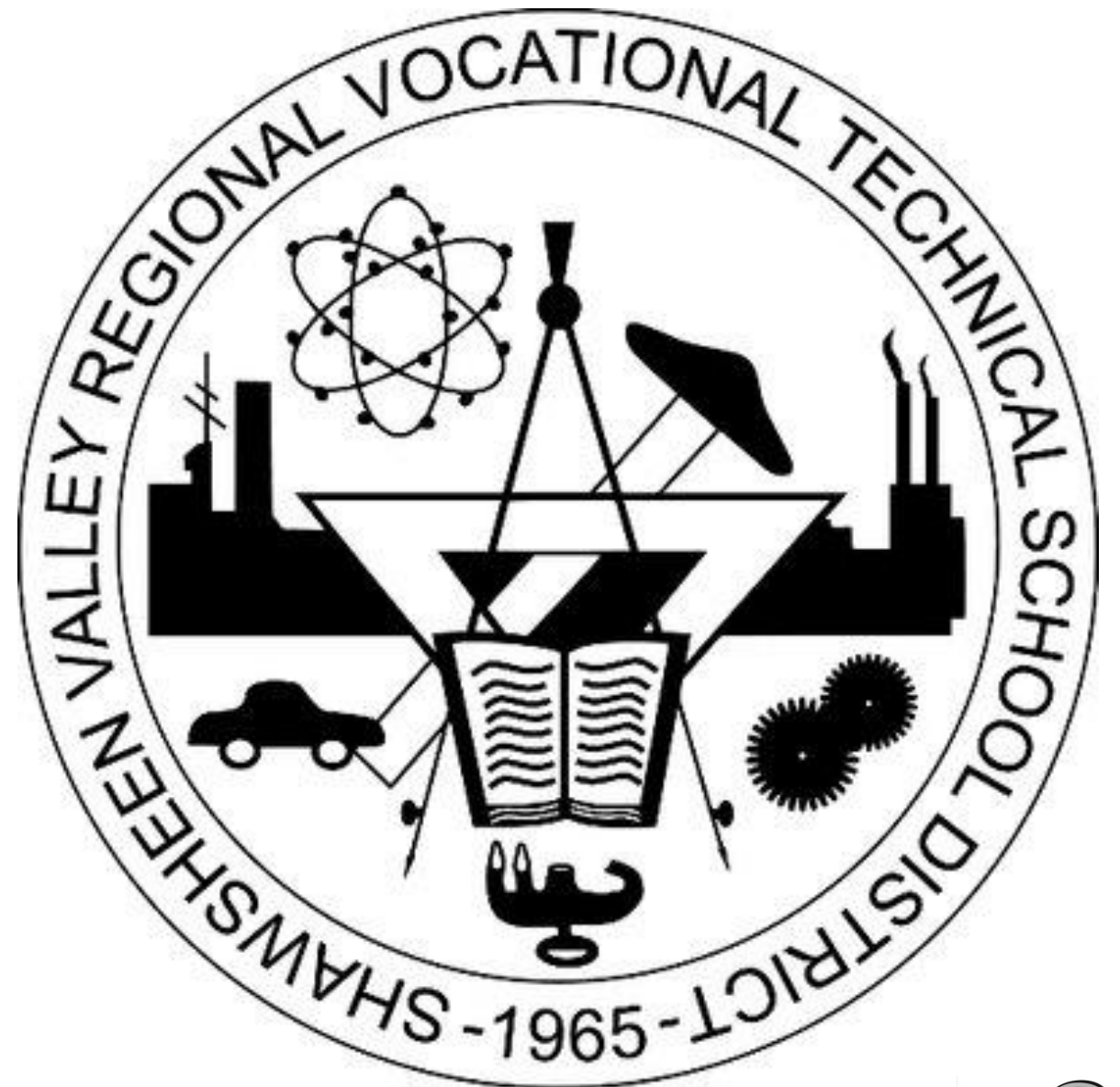


Welcome,  
Class of 2028!

# Accepted Students Night

Tuesday, April 23, 2024

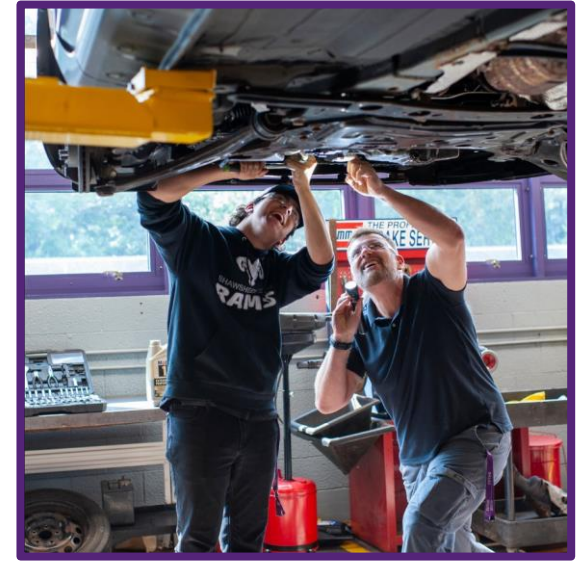
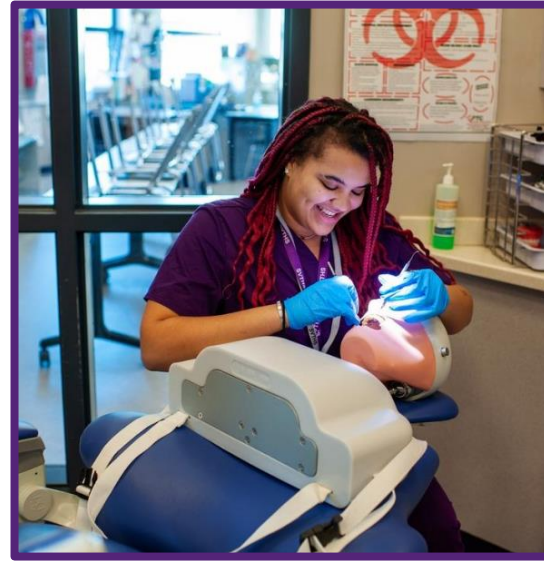
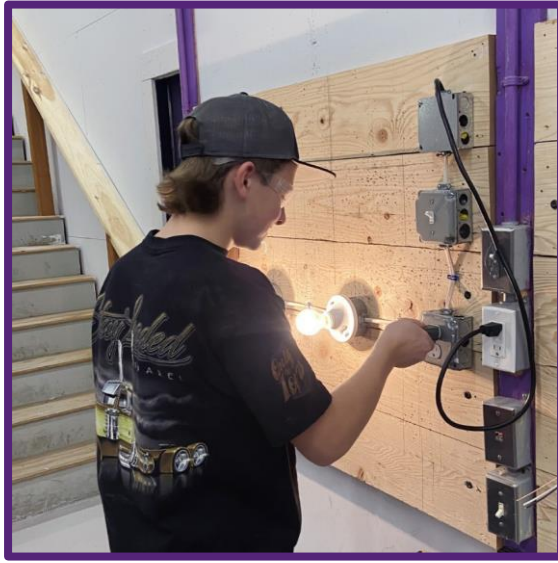




## Part I. Welcome & Overview

➤ Jessica Cook, Principal





# Our Mission

*At Shawsheen Valley Technical High School, it is our mission to provide a positive learning experience in a safe educational environment that encourages all students to reach their full potential, emphasizes the value of a strong work ethic, and prepares them for adult life in a competitive world.*

# Our Core Values

SVTHS Core Values		
Accountability	Integrity	Respect
<i>Take responsibility for your words, actions, and commitments.</i>	<i>Be honest and do the right thing, even when no one else is watching.</i>	<i>Treat everyone the way you wish to be treated.</i>
At SVTHS, we strive to be our best selves, and hold ourselves accountable for our own words and actions. We follow through on our commitments and take responsibility when we fail to meet this standard.	We believe in being honest and doing the right thing. We hold ourselves to this high standard even when it is inconvenient or when no one else is watching.	We are committed to creating a safe, welcoming, and inclusive learning environment for all members of our community. We exhibit respect for one another through our words and actions, and by assuming best intentions of one another.
<p><i>We exhibit accountability by:</i></p> <ul style="list-style-type: none"> <li>▪ Showing up on time.</li> <li>▪ Showing up prepared.</li> <li>▪ Following through on our commitments.</li> <li>▪ Asking for help when we need it.</li> <li>▪ Learning from our mistakes.</li> <li>▪ Being a part of the solution.</li> </ul>	<p><i>We exhibit integrity by:</i></p> <ul style="list-style-type: none"> <li>▪ Being honest and trustworthy.</li> <li>▪ Doing what is right.</li> <li>▪ Putting in our best effort.</li> <li>▪ Setting a good example for our peers.</li> <li>▪ Accepting responsibility for our mistakes.</li> <li>▪ Repairing our mistakes.</li> </ul>	<p><i>We exhibit Respect by:</i></p> <ul style="list-style-type: none"> <li>▪ Speaking kindly to one another.</li> <li>▪ Listening to one another.</li> <li>▪ Cleaning up after ourselves.</li> <li>▪ Accepting &amp; celebrating differences.</li> <li>▪ Treating every day like a new day.</li> <li>▪ Assuming best intentions.</li> </ul>





# Preparing Students for Adult Life in a Competitive World

## What We Offer Students

### Academic Experience:

- **Rigorous Academic Program:** Students can access multiple pathways to prepare for postsecondary success. This is accomplished in half the time as compared to traditional high schools.
- **MCAS:** Students are prepared to achieve passing MCAS scores through differentiated approaches.
- **Concurrent Enrollment:** Students can begin to build their college transcripts during high school at a reduced cost.



### Career & Technical Education (CTE) Experience:

- **Grade 9 Exploratory Program:** Students identify interests, goals & talents with exposure to multiple pathways.
- **Permanent Vocational-Technical Program** – Students develop in-demand skills & attain credentials & hours.
- **SkillsUSA** – Students can showcase their skills by competing against their peers in MA and across the nation.
- **Co-operative Employment Program** – Students gain real-world experience & strengthen employability skills.

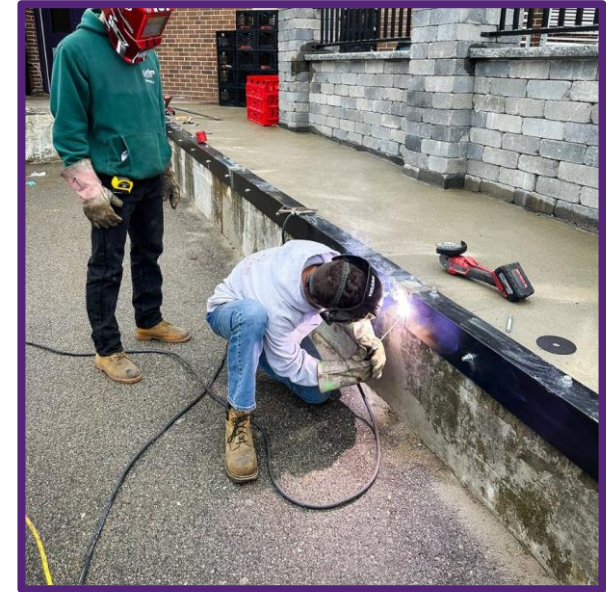


# Preparing Students for Adult Life in a Competitive World

## Student Expectations

**Transition to High School:** Students will experience increased independence & responsibility in high school. Students are expected to conduct themselves in accordance with school rules and our core values.

**Safety:** Safety is ESSENTIAL in our school. Students can be seriously injured if students do not comply with all safety expectations. Violations of safety requirements are taken VERY seriously.



**Attendance:** Students cannot learn if they are not here. Every day a student is absent they lose precious hours in their academic & CTE courses. Absences, tardies, & dismissals are discouraged for routine appointments and things such as driving lessons.



**Positive Community Members:** Students are expected to contribute positively to our school community and not behave in ways that negatively impact the learning and experiences of their peers. Act of bullying, discrimination, or harassment are not acceptable at Shawsheen.

# Schedule and Important Dates:

## Over the summer:

- Student course assignments
- Start of school-year information
- Family Aspen credentials

## New Student Orientation: Tuesday, September 3, 2024

- Academic schedule walk-through
- Mobile devices issued
- Technology overview session
- Student credentials for all school platforms
- Student expectations
- Orientation Leader Activities

## All Students Report: Wednesday, September 4, 2024

- Academic week for freshmen
- 1st exploratory cycle: September 9-13, 2024

[2024-2025 SVTHS School Calendar](#)

## Rotating Weeks (identified on school calendar):

- Week 1 = ACADEMIC WEEK for Grade 9
- Week 2 = SHOP WEEK for Grade 9
  - Exploratory = First 14 shop weeks of the year

Daily Schedule	
7:00am-7:25am	Student entry begins at 7am Breakfast in cafeteria until 7:25am
7:30am-7:47am	Students report to HR by 7:30am
7:47am-2:04pm	8 period school day 5 student lunches
2:04pm	Student Dismissal
3:15pm	Late Bus Leaves (Mon-Thurs)
5:30pm	Late Bus Leaves (Mon-Fri)

# Who We Are

ROLE	NAME
Superintendent-Director	Tony McIntosh
Principal	Jessica Cook
Assistant Principal	Kevin Caruso
Director of Academic Programs	Danica Johnston
Director of Vocational Technical Programs	Dave Norkiewicz
Director of Guidance & Health Services	Jim Carlson
Director of Support Services	Jeff Albert
Director of Educational Technology	Annamaria Schrimpf
Athletic Director	Al Costabile





## Part II. Exploratory, Shop Selection, & Permanent Shop Placement

- Jim Carlson, Director of Guidance & Health Services
- Dave Norkiewicz, Director of Vocational Technical Programs

# Freshman Exploratory

Exploratory is a program designed to offer all ninth-grade students the opportunity to understand and engage in the educational pathway options available to them at Shawsheen.

## 14 Different Program Cycles

- For the first 14 shop weeks (Week 2)
- All programs have enrollment capacities.
- A student's performance is essential in obtaining their top selection.
- Students will select their shop at the end of the 3rd Quarter.



# The Exploratory Experience

Student Exploratory experiences include applied learning that introduces students to career opportunities and authentic experience specific to each program option. At completion of Exploratory, students will be able to:

- Identify the pathways available to them at Shawsheen.
- Identify potential career opportunities available to them through each pathway.
- Understand student outcomes for each pathway (i.e. career credentials, work-based learning, cooperative education, articulated college credit, and transcribed college credit(s)).
- Analyze and evaluate the pathways as they relate to their interest and skills.



# How our Exploratory Program Works

Exploratory is a 28-week process where 9th-grade students can explore 14 different career and vocational/technical programs.

The exploratory schedule is based on the students' rank-ordered choices identified on their application. Students are assigned additional programs to ensure exposure to non-traditional career areas.

Freshmen participate in Exploratory quarters 1-3, and are placed in permanent shops for quarter 4.

# Exploratory Assessment

Multiple methods, strategies, techniques, tools and instruments for collecting information are used to determine students' desired learning outcomes.

To provide a fair assessment for the fourteen exploratory cycles a comprehensive rubric tool is used.

This rubric clearly indicates achievement criteria across all the components of any kind of student work, from written to oral to visual.

Instructors use a rubric that identifies aptitudes and abilities to perform in the career and technical area.

At the end of the exploration process, students are ranked by a score for each vocational/technical program.

Doing well in all exploratory courses is important since the overall exploratory grade average can impact the selection and serve as a "tie-breaker".

# Exploratory Shop Safety

Each exploratory program has a Health & Safety plan that ensures a safe working environment for staff and students in the program and classroom areas by describing the general rules of conduct and other information useful in helping to prevent laboratory incidents and to appropriately respond to and report any incidents that may occur.

## **Students will receive the “What to Wear/Bring to Exploratory Shop Week Form”**

This document was developed to assist your child in knowing what to wear or NOT to wear for each program they explore.





# Exploratory Shop Safety

Examples of what is on the “What to Wear/Bring” document



\*Safety glasses are provided\*

## What to Wear/Bring to Exploratory Shop Week

*ADDITIONAL INFORMATION PERTAINING TO EACH PROGRAM WILL BE PROVIDED DURING SHOP*

### ADVANCED MANUFACTURING TECHNOLOGY

**Clothing:** Long pants, work boots or leather shoes (**NO Sneakers**), cotton work shirt, safety glasses. **NO** nylon fabrics, **NO** yoga pants, **NO** sweatpants, **NO** dresses, **NO** shorts, **NO** winter boots, **NO** tank tops

**Other:** **NO** dangling Jewelry. Long hair must be off shoulders and tied back. Bring pencil, Agenda / Passbook

### AUTOMOTIVE COLLISION REPAIR & REFINISHING:

**Clothing:** Long pants, work boots or leather shoes (**NO Sneakers**), cotton work shirt, safety glasses. **NO** nylon fabrics, **NO** yoga pants, **NO** sweatpants, **NO** dresses, **NO** shorts, **NO** winter boots, **NO** tank tops

**Other:** **NO** dangling Jewelry. Long hair must be off shoulders and tied back. Bring pencil, Agenda / Passbook

# Shop Selection Process

- Students are asked to rank their top three choices twice during the 9th-grade year.
- This is paired with career planning activities and assessments through Naviance to provide them with an opportunity to explore the different aspects of the careers they are interested in.
- A student's performance is essential in obtaining their top selection.
- At the end of the explore experience students will select their top 3 choices.

# Permanent Shop Placement

All programs have enrollment capacities.

A student's performance is essential in obtaining their top selection.

At the end of the explore experience students will select their top 3 choices.

Permanent shop placement begins in the 4<sup>th</sup> Quarter (April).

Roughly 90% of the students are admitted into their 1st choice and approximately 95% get their 1st, 2nd, or 3rd choice.





### Part III. Academics

➤ Danica Johnston, Director of Academic Programs

# The Freshman Year Academic Experience

Director of Academic Programs—Danica Johnston

All students take:

- English 9
- Geometry or Algebra I
- US History I
- Civic Literacy
- Digital Literacy
- Biology
- PE/Health

\*\*English Learner Education Program\*\*



# Placement Testing and Levels

- 5 levels of CP English (Also offer a C-grid 9000-level course)
- 4 levels of Mathematics: Honors Geometry, 3 levels of CP Algebra 1 (plus a 9000)
- 3 levels of CP Lab Cell Biology (plus a 9000)
- 2 levels of CP U.S. History 1 (plus a 9000)
- 1 level of CP Digital Literacy and Civic Literacy (plus a 9000)
- 1 level of Physical Education and Wellness
- [SVRVTHS Program of Studies FINAL 2024-2025 .pdf \(shawsheentech.org\)](https://shawsheentech.org)



# Grade Point Equivalency (GPA)

Numeric	Alpha	Concurrent Enrollment	1	2	3	4	5
100-96	A+	4.20	4.00	3.80	3.50	3.20	3.00
95-93	A	4.15	3.95	3.75	3.45	3.15	2.95
92-90	A-	4.05	3.85	3.65	3.35	3.05	2.85
89-87	B+	3.95	3.75	3.55	3.25	2.95	2.75
86-83	B	3.70	3.50	3.30	3.00	2.70	2.50
82-80	B-	3.45	3.25	3.05	2.75	2.45	2.25
79-77	C+	3.20	3.00	2.80	2.50	2.20	2.00
76-73	C	2.95	2.75	2.55	2.25	1.95	1.75
72-70	C-	2.70	2.50	2.30	2.00	1.70	1.50
69-67	D+	2.45	2.25	2.05	1.75	1.45	1.25
66-63	D	2.20	2.00	1.80	1.50	1.20	1.00
62-60	D-	1.95	1.75	1.55	1.25	0.95	0.75
<59	F	0.00	0.00	0.00	0.00	0.00	0.00



# 9th Grade Schedule

- Placement scores, grades, attendance & teacher recommendation are taken into consideration when determining one's schedule for 9th grade
- Parents and students will receive a copy of their course placement by the end of the school year.
- There will be an opportunity to ask questions & suggestions in the weeks after that information is shared.
- If a student is on an IEP, a transition meeting will be held, and there is a possibility of levels changing.
- If a student is on a 504, they will also have a meeting (will not impact schedule).



# Concurrent Enrollment

---

- Offered during 11th and 12th grade
- Allows students to take college-level classes during their high school schedule
- Classes are taught by Shawsheen teachers who have been vetted by Middlesex Community College as adjunct professors
- Students are delivered a rigorous college-level curriculum, and concurrently fulfil their high school graduation requirements, while also earning college credit at a significantly reduced cost.
- Courses offered SY 2024-2025:

Statistics - Calculus - Physics - Chemistry - English Comp 101 - H. English - Comp 101 - American Government





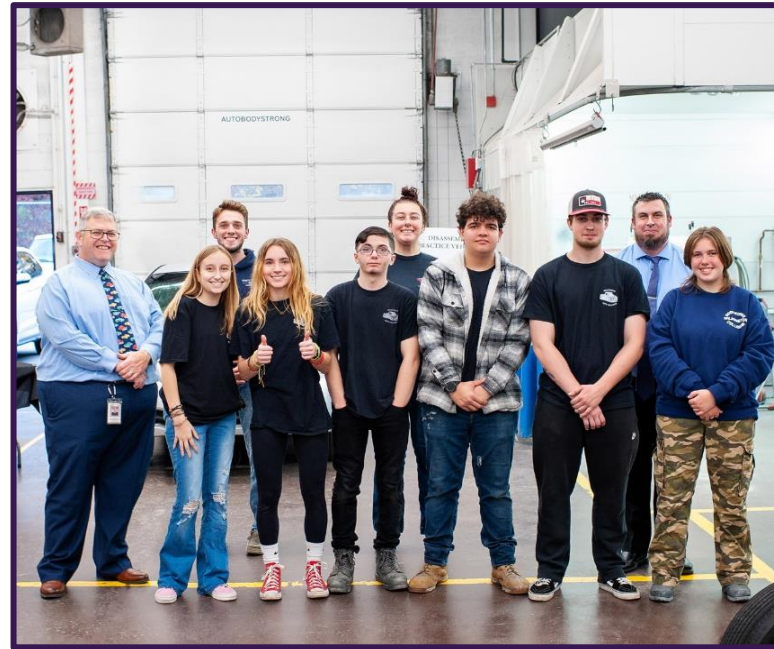
# Massachusetts Comprehensive Assessment System

## MCAS

---

- Students must pass the ELA, Mathematics and Science MCAS to receive a high school diploma in Massachusetts
- We have a very skilled faculty – your students will be prepared well
- February and April Break MCAS Bootcamps
- After- School sessions throughout the year
- Remediation during junior and senior year (as necessary)





## Part IV. Supporting All Students

- Jim Carlson, Director of Guidance & Health Services
- Jeff Albert, Director of Support Services
- Kevin Caruso, Assistant Principal



# Guidance Counseling & Health Services

**Jim Carlson** – Director of Guidance and Health Services

504/Title IX/Civil Rights Coordinator

## 9<sup>th</sup> Grade Guidance Counselors:

- Angela Caira
- Matt Smith

## 10<sup>th</sup>- 12<sup>th</sup> Grade Guidance Counselors (Assigned by shop):

- Greg Harrison
- Terry Henry
- Kelly McFadden
- Amanda Samaha

## Nurses' office:

- Nina Brophy - RN, BSN
- Elizabeth West - RN, BA
- Kathy Gravlin - LPN



# Support Services (Special Education)

*Jeff Albert – Director of Support Services*

## Support Services has a Team of 25 Professional Staff

THE SUPPORT SERVICES TEAM SUPPORTS ALL STUDENTS WHO ARE ON AN INDIVIDUAL EDUCATIONAL PROGRAM (IEP) WITH THEIR APPROPRIATE NEEDS AND SERVICES TO ACCESS SHAWSHEEN PROGRAMING

THE SUPPORT SERVICES STAFF IS COMPRISED OF 15 TEACHERS, ONE SPEECH LANGUAGE PATHOLOGIST, TWO SCHOOL PSYCHOLOGISTS, TWO SCHOOL ADJUSTMENT COUNSELORS, 5 PARA-PROFESSIONALS

**In Addition to our Team, we also contract with a:**

- *Behavior Specialist* - *Occupational Therapist*
- *Physical Therapist* - *Assistive Tech Specialist*

**We Offer a full range of services that include;**

- *Consultation*
- *Co-teaching/support in the general education setting*
- *Direct instruction in small groups*
- *Related Services*

**Counseling and Mental Health Supports**

# Dean's Office

- Enforces the student handbook
- Provides support to students
- Monitors student attendance

**Dean of Students-Christine Tobin**

**Administrative Assistant- Lynne Melaragni**

**Attendance and Behavior Monitor- Kylee Hodnett**

**In-School Suspension Monitor- Shawn Anderson**

**School Resource Officer- Sarah Croke**



## Part V. Engaging Students Beyond the School Day

- Kevin Caruso, Assistant Principal
- Al Costabile, Athletic Director



# Get involved with our Shawsheen Clubs

Assistant Principal for Student Affairs—Kevin Caruso

## GET INVOLVED!

### Clubs & Activities

Alumni Association	Parents' Adv. Council
Art Club	Ramblings
Anti-Bullying Club	Robotics Club
Book Club	Ski Club
Chess Club	SkillsUSA
GSA	Student Council
Gaming Club	Student Orientation & Mentoring
Music Club	TDVA
Literary Magazine	Theater Arts Club
Math Club	Traveling Rams
NVT Honor Society	Yearbook
Public Speaking	Sportsmen Club
Diversity Club	
Newspaper Club	

### Sports

Football	Swimming
Volleyball	Boys Lacrosse
Wrestling	Girls Lacrosse
Boys Soccer	Track and Field
Girls Soccer	Cheerleading
Cross Country	Baseball
Boys Hockey	Football
Girls Hockey	Softball
Boys Basketball	Tennis
Girls Basketball	Golf
Football Cheering	
Esports	

CONTACT: [QR CODE]

HAVE FUN!

MAKE NEW FRIENDS!

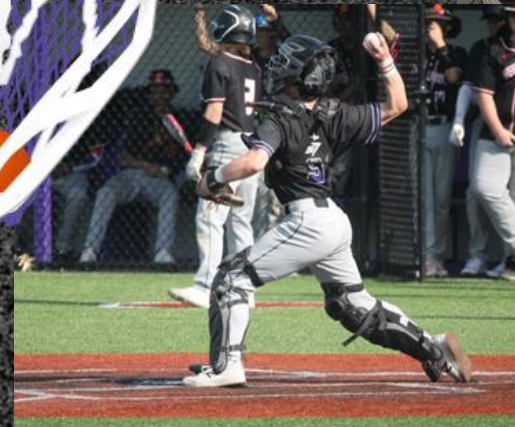
MAKE A DIFFERENCE!





# ATHLETICS AT SHAWSHEEN

Director of Athletics—Al Costabile





# Fall Sports Information

## Fall Sports

- Football (Varsity, JV and Freshman)
- Football Cheering (Varsity and JV)
- Boys Soccer (Varsity and JV)
- Girls Soccer (Varsity and JV)
- Cross Country
- Volleyball (Varsity and JV)
- Golf

## Tryout Info

Football Cheer-Monday, June 3 – Wednesday, June 5 5:00pm-8:00pm in Cafeteria

Football-Thursday, August 18 at 2:00pm in Gym

All Other Sports-Monday, August 19

All Student-Athletes interested in participating in a sport, MUST register through [FamilyID](#), have a current physical uploaded to their FamilyID account and complete concussion protocols ***prior to tryouts***.

Please check the [Shawsheen Tech Athletics](#) webpage for more details including Registration Links, Sport Specific Tryout Information and Coaches Contact Information.

## Questions

Al Costabile, Athletic Director - [acostabile@shawtech.org](mailto:acostabile@shawtech.org)

Jaime Lee, Athletics Administrative Assistant - [jlee@shawtech.org](mailto:jlee@shawtech.org)



## Part VI. Educational Technology

➤ Annamaria Schrimpf, Director of Educational Technology



# Educational Technology and Digital Learning

Annamaria Schrimpf – Director of Educational Technology/Digital Learning



## STUDENT INFO

### 1:1 laptop program

- Week 1—ACADEMIC week all students bring laptop
- Week 2—SHOP week teacher's discretion
- Tech Insurance Fee
- Chargers and pens can be purchased at School Store

### Online resources

- Office 365
- Single Sign On for most school resources—ASPEN, Office 365, Destiny, Naviance, Schoology, ClassLink

## PARENT INFO

- Help Desk link on website
  - ASPEN issues, etc
- Blackboard Parent Notification
- Back to School Student Registration



### Tomorrow:

- you will receive an email to complete online registration – please respond promptly!

### Before summer:

- you will receive your student's course placement info & have time to respond with questions & suggestions.

### Over the summer:

- all start of school year information will be shared, including but not limited to: student schedules, bus routes, student handbook information, student handbook electronic sign-off, and all relevant updates.



### Part VII. What Happens Next

- Jessica Cook, Principal

# Online Resources

---

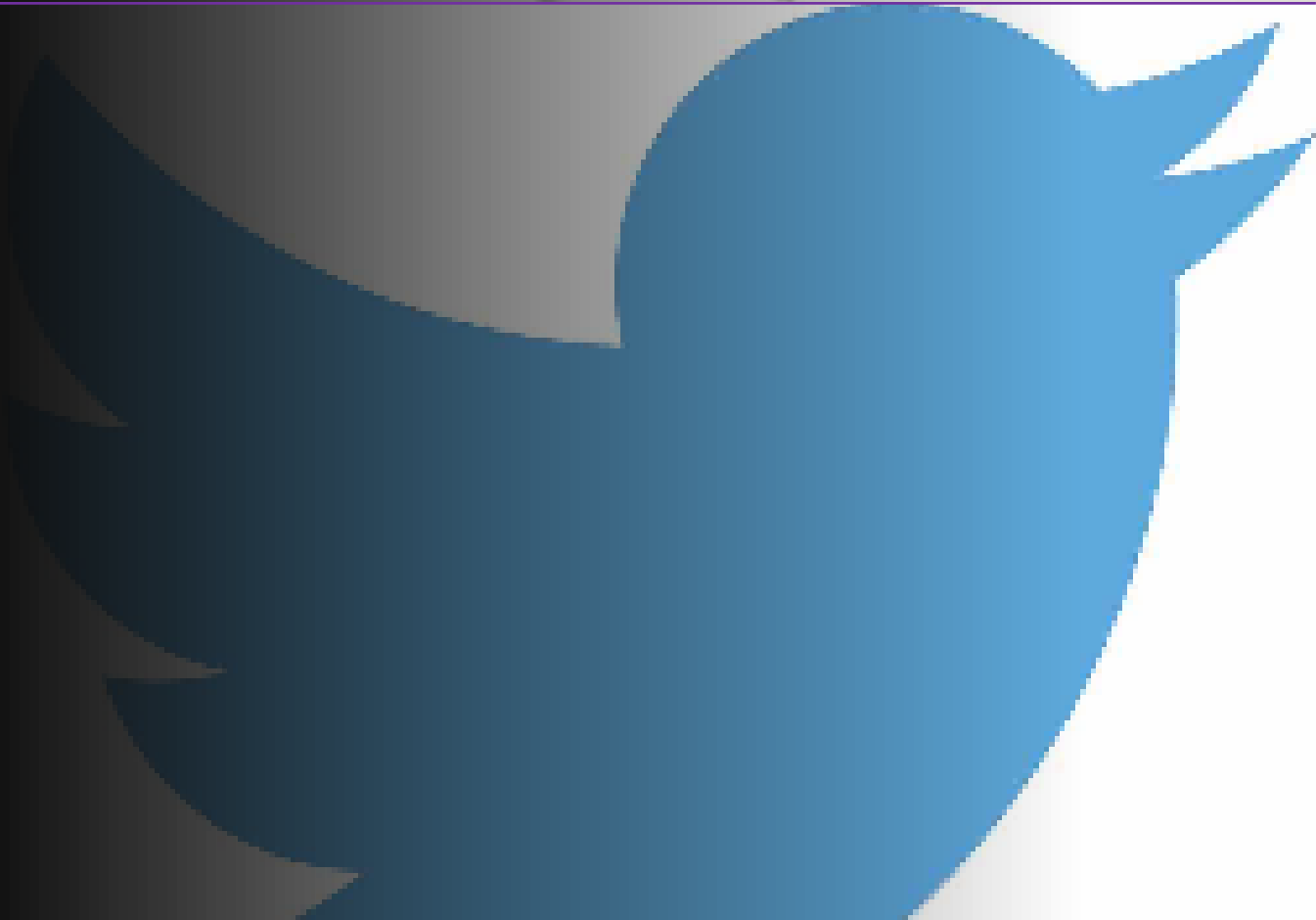
[WWW.SHAWSHEENTECH.ORG](http://WWW.SHAWSHEENTECH.ORG)

**SCHOOL-WIDE INFORMATION**

**@SHAWTECH\_HS (Twitter & Instagram)**

**SPORTS INFORMATION**

**@SHAWTECH\_SPORTS (Twitter)**





THANK YOU  
FOR  
COMING—ANY  
QUESTIONS?

